



**WITH TOTAL CONTROL,
PROTECTION IS GUARANTEED.**

**Choose THE SECURITY of WIRELESS
VIDEO VERIFICATION!**

SPECTRUM DT WS4 AM VIDEO is the outdoor **triple-technology detector with an integrated camera**, designed to provide the highest level of protection with **immediate video verification of alarm events**.

Thanks to its **built-in camera** and infrared sensor, SPECTRUM DT WS4 AM VIDEO can capture images and promptly send them to the user in video format.

EASY INSTALLATION

Self-learning and control panel configuration.

NIGHT VISION

Day/night camera function with infrared led.

MICROWAVE

Adjustable microwave IN AND mode with infrared.

ANTIMASKING

Active infrared antimasking with adjustable threshold.

ANTI-OPENING TAMPER PROTECTION

Two waterproof push-buttons operating in AND mode.

COVERAGE

100° coverage with a range of up to 12 meters and internal adjustment from -45° to +45°.

IMAGES RESOLUTION

Standard resolution: 320×240 with 10 alarm frames
High quality: 640×480 with 5 alarm frames

INTEGRATED CAMERA

Integrated camera with recording of pre and post alarm frames.

DUAL PIR DETECTOR

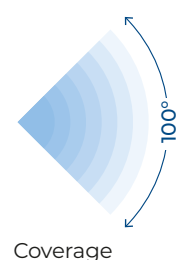
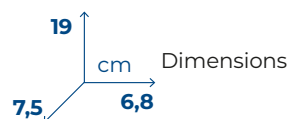
Dual passive infrared with aspherical lens and look down mirror with a range of 12 meters. Pet immune.

EXTERNAL POWER SUPPLY AND/OR BATTERY

The detector can be powered in two ways:

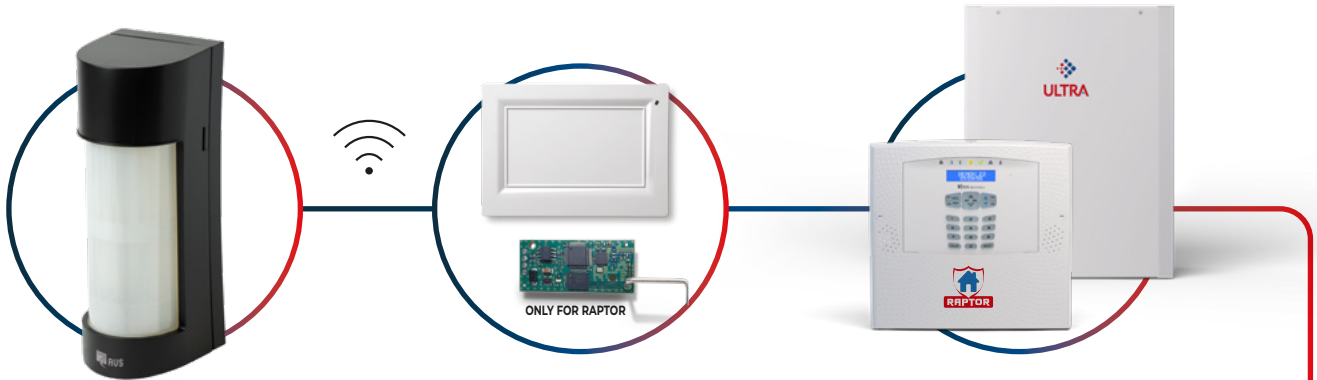
External
12 V DC power supply + 2x 3,6V - 2,6 Ah batteries as a backup (buffer) system

Power supplied exclusively
by 2x 3,6V - 2,6 Ah batteries



WIRELESS VIDEO VERIFICATION

secure, reliable and flexible!



SPECTRUM DT WS4 AM VIDEO

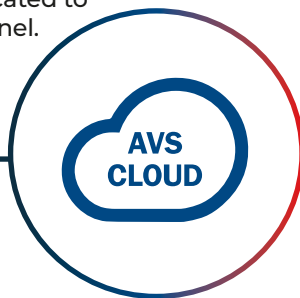
Transmits the images and audio detected following an alarm via radio to the XSAT WS4 VIDEO and/or to the RVS dedicated to the RAPTOR control panel.

XSAT WS4 VIDEO RVS VIDEO SATELLITE*

Sends the images and audio to AVS control panels, through the RS 485 serial BUS. *only for Raptor

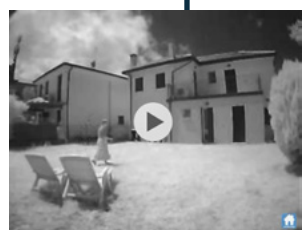
THE CONTROL PANELS

Transmit images and audio to MY AVS Cloud via GPRS / 4G connection or through the EWEB PLUS VIDEO network board for Raptor and integrated LAN for ULTRA.



THE CLOUD AVS

Composes a video complete with audio and sends it by notification Push to the MyAVS ALARM App.



APP MY AVS ALARM

The end user receives the Push notification to view the video of the alarm that happened.



The detector is integrated with the **MyAVS ALARM** app, through which the user can receive push notifications with video, review recordings, and view the complete history of all events.

Technical Features	
Detection Type	Dual PIR + microwave
Coverage	100° over 12 meters / adjustable on horizontal plane
Mounting support	K21
Pet immunity	Yes
Anti-removal detection	Automatic, with integrated accelerometer
Anti-mask	Yes – with adjustable threshold
Digital temperature compensation	Yes
Power supply	External power supply 12 V + 2 3,6 V - 2,6 Ah backup batteries
Consumption	18 µA standby – 75 mA alarm
Radio frequency	FM 868 MHz – bidirectional GFSK
Number of radio channels	10
Rolling code	Yes
Automatic radio channel switching	Yes
Automatic transmission power adjustment	Yes
Open field range	~ 700 meters
Alarm radio communication	Yes
Alarm image transmission	Yes – with pre-alarm and post-alarm images
Anti-mask radio communication	Yes
Tamper radio communication	Yes
Low battery radio communication	Yes
Supervision radio communication	Yes
Walk test	Yes
Firmware update	Yes
Dimensions (D x W x H)	68,3 x 75,4 x 189,4
Environmental conditions	-25°C to +55°C
Usage type	Outdoor detector
Compatibility	XSAT WS4 VIDEO with AVS control panels
Video Features	
Integrated camera	Yes – VGA
Integrated microphone	Yes
Video coverage / Focal length	90° / 4 mm
Image resolution	320 x 240 / 640 x 480
Night vision illuminator	Yes, infrared
Depth of field	Up to 12 meters depending on lighting conditions
Day/Night function	Automatic
Image transfer speed	100 Kbits/s
Compatibility	With MY AVS Alarm App
Special Functions	
Remote image request	Yes – via App
Camera exclusion	Yes – user controlled
Energy saving	Captures images only upon control panel confirmation

AVS ELECTRONICS S.p.A.

Via Valsugana 63 - 35010 Curtarolo (PD) - Italy
 Tel. +39 049 9698 411
 avs@avselectronics.it
 www.avselectronics.com



FOLLOW US

